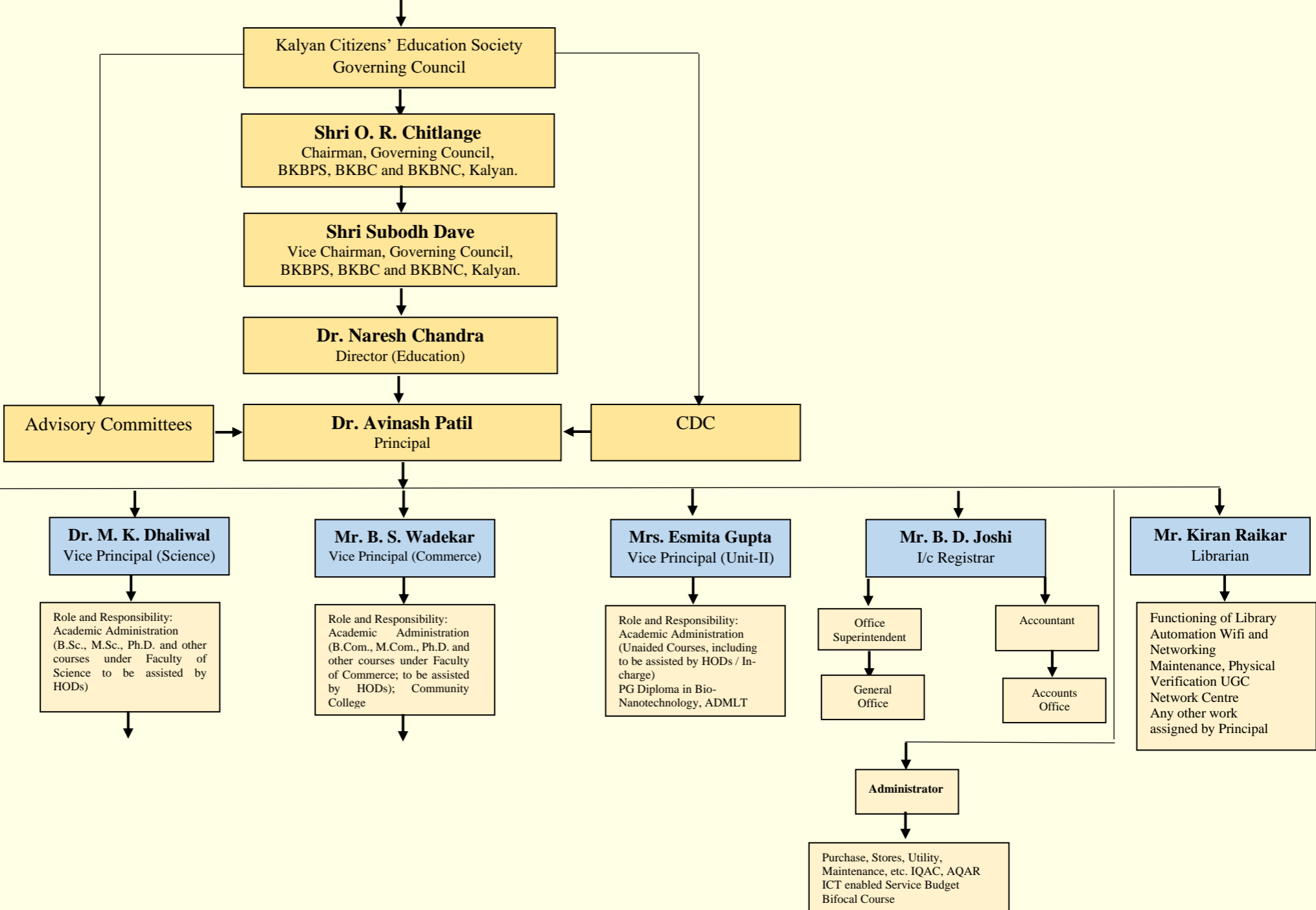


B. K. Birla College of Arts, Science & Commerce (Autonomous), Kalyan
 Degree College (2020-21)
 Organization Chart



NIRF /India Today/The Week Rankings; BoS (Arts); Academic Council; Governing Body; Vision; Workload and Time Table; Activity Calendar; Appointments (Arts Faculty); Faculty Enrichment Programs / Faculty Development Program; Students Council, Students Welfare; Sports and Gymkhana; Degree Distribution Function; To promote Research, Collaborations, Training Programs; News letter; Internal Examinations (Arts), Result Analysis (Arts) New Initiatives; *TQM (Arts)*; Industry – Academia Interface; Image Building, PR, Publicity, Media Relations; Placement Activity; Faculty Exchange within the University, State, India and Abroad; Organizing Seminars / Workshops / Conferences / Symposium; Social Science Association, Marathi, English and Hindi Literary Association, Center for Epigraphy; Any other work assigned by the Principal

NIRF /India Today/The Week Rankings; BoS (Science); Academic Council; Vision; Workload and Time Table; Activity Calendar; UGC, FIST, DBT-Star College Scheme; Maintenance and Campus, Ambience; Gardening, Waste Management; Counselling Cell; To promote Research, Collaborations, Training Programs; News letter; Internal Examinations (Science) Result Analysis (Science); New Initiatives; *TQM (Science)*; Industry – Academia Interface; Image Building, PR, Publicity, Media Relations; Placement Activity; Faculty Exchange within the University, State, India and Abroad; Organizing Seminars / Workshops / Conferences / Symposium; Science Association, Nature Club, Innovation Club, Campus; Any other work assigned by the Principal

NIRF /India Today/The Week Rankings; BoS (Commerce); Academic Council; Vision; Workload and Time Table; Activity Calendar; Appointments (Commerce Faculty); NSS, DLLE, Alumni Association Counselling Cell, Career Counselling; Prize Distribution Function; To promote Research, Collaborations, Training Programs; News Letter; Internal Examinations (Commerce), Result Analysis (Commerce) New Initiatives; *TQM (Commerce)*; Industry – Academia Interface; Image Building, PR, Publicity, Media Relations; Placement Activity; Organizing Seminars / Workshops / Conferences / Symposium; Commerce Association; Any other work assigned by the Principal

NIRF /India Today/The Week Rankings; Bos (Unit – II); Academic Council; Vision; Workload and Time Table; Activity Calendar; Appointments (Unit II); DBT-Star College Scheme; ICT enabled Service Birla College Repository / Depository; Career Counselling; Prize Distribution Function; To promote Research, Collaborations, Training Programs; News letter; Internal Examinations (Unit - II), Result Analysis (Unit - II) New Initiatives; *TQM (Unit II)*, Industry – Academia Interface, Image Building, PR, Publicity, Media Relations; Placement Activity; Organizing Seminars / Workshops / Conferences / Symposium; Any other work assigned by the Principal