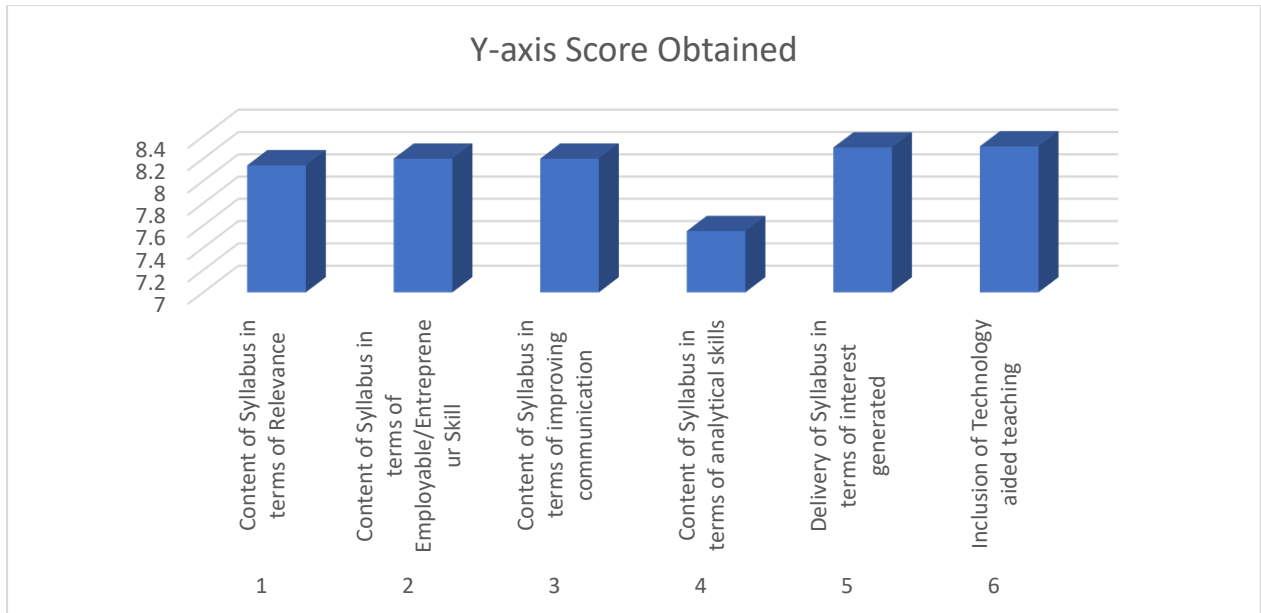


**B. K. Birla College of Arts, Science, and Commerce (Autonomous), Kalyan
1.4.1**

Review of Syllabus(July 2020 – June 2021) Students



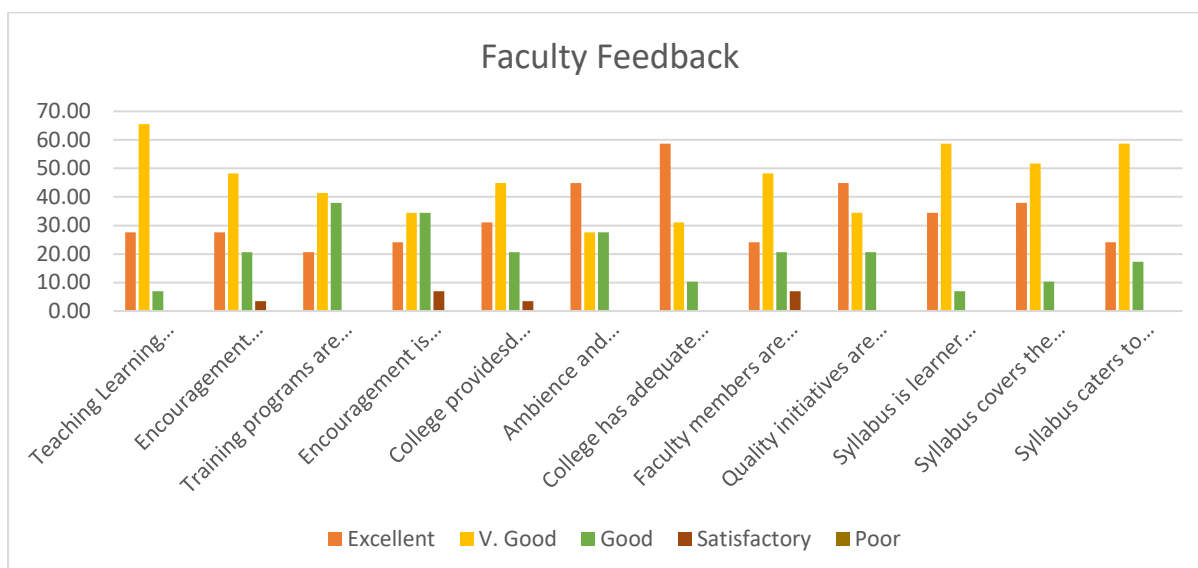
| X-Axis Label | Details | Y-axis Score Obtained |
|--------------|---------------------------------------------------------------|-----------------------|
| 1 | Content of Syllabus in terms of Relevance | 8.14 |
| 2 | Content of Syllabus in terms of Employable/Entrepreneur Skill | 8.2 |
| 3 | Content of Syllabus in terms of improving communication | 8.2 |
| 4 | Content of Syllabus in terms of analytical skills | 7.55 |
| 5 | Delivery of Syllabus in terms of interest generated | 8.3 |
| 6 | Inclusion of Technology aided teaching | 8.31 |

Action Taken Report

| Sr. No | Agenda | Focused Area | Action Taken |
|--------|------------------------------------------------------------------|---------------------------------------------------------------------------------------------------|----------------------------------------------------------------------------------------------------------------------------------------------------------------------------------------------------------------------------------|
| 1 | Content of Syllabus in terms of Relevance | Geographical/Local/Global Relevance needs to be added to every subject | In every subject, relevant topics related to geographical or local relevance are added after the approval. Recent developments in every field were also updated. |
| 2 | Content of Syllabus in terms of Employable/Entrepreneurial Skill | Adding experiential learning in the syllabus to encourage Employability and Entrepreneurial Skill | Certain units of the syllabus are modified, and a few new units are added to promote Employability and Entrepreneurial Skill. Experiential learning was added. Project report like field trip, industrial visit, internship etc. |
| 3 | Content of Syllabus in terms of improving communication | Understanding formal communication by the students | The syllabus is incorporated with the topics specializing in reading, thinking, and writing skills. |
| 4 | Content of Syllabus in terms of analytical skills | Developing analytical skills among students | Practical components relevant to the comparison and analysis are added. |
| 5 | Delivery of Syllabus in terms of interest generated | Ensuring effective learning | Due to COVID-19 situations all teaching learning were online mode. Curriculum delivery was ensured by showing YouTube Video, educational video & E-Material etc. |
| 6 | Inclusion of Technology aided teaching | Better understanding of the concepts | Focus shifted towards conceptual learning through portals like SWAYAM-NPTEL, PPT, and recorded lectures by the faculty. |

B. K. Birla College of Arts, Science, and Commerce (Autonomous), Kalyan

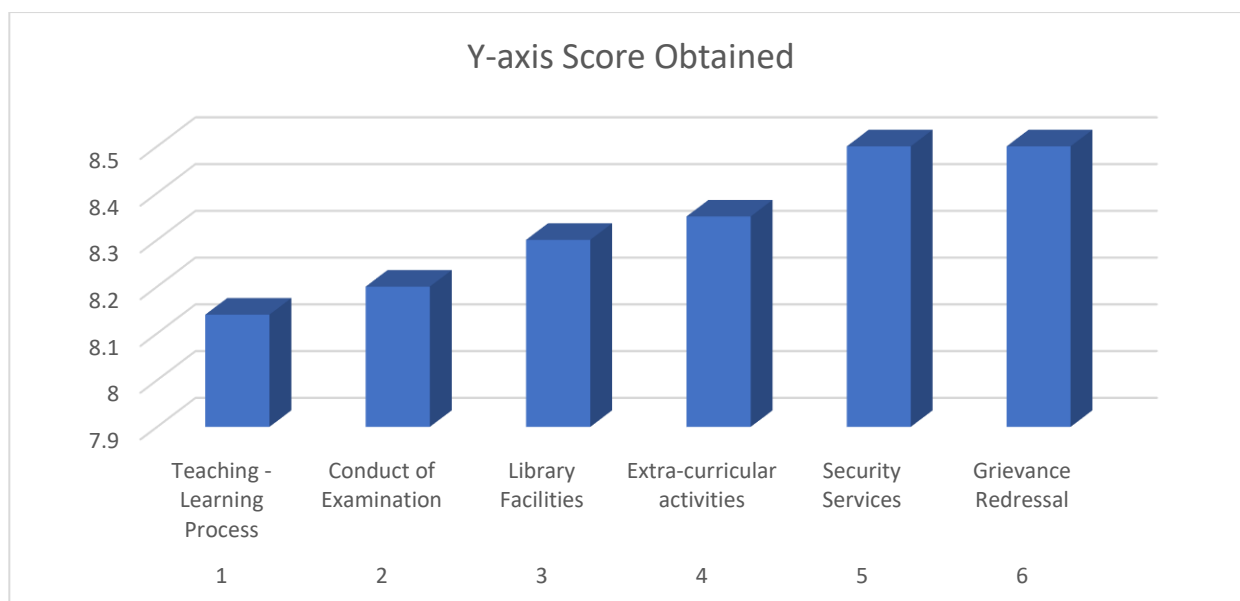
1.4.1 Review of Syllabus (July 2020 – June 2021) Faculty



| Details | Excellent | V. Good | Good | Satisfactory | Poor |
|------------------------------------------------------------------------------------------------------------------------------------|-----------|---------|-------|--------------|------|
| Teaching Learning Environment | 27.59 | 65.52 | 6.90 | 0.00 | |
| Encouragement provided to introduce innovative programs to impart employability skills amongst students | 27.59 | 48.28 | 20.69 | 3.45 | |
| Training programs are organised for faculty development | 20.69 | 41.38 | 37.93 | 0.00 | |
| Encouragement is provided to strengthen research culture within the departments | 24.14 | 34.48 | 34.48 | 6.90 | |
| College provides adequate ICT facilities to faculty members | 31.03 | 44.83 | 20.69 | 3.45 | |
| Ambience and physical infrastructure facilities better performance, classrooms, and laboratories, security, hygiene and sanitation | 44.83 | 27.59 | 27.59 | 0.00 | |
| College has adequate collection of books in Central Library | 58.62 | 31.03 | 10.34 | 0.00 | |
| Faculty members are encouraged to participate in seminars / workshops / symposia / conferences | 24.14 | 48.28 | 20.69 | 6.90 | |
| Quality initiatives are introduced for overall development of the college | 44.83 | 34.48 | 20.69 | 0.00 | |
| Syllabus is learner centric | 34.48 | 58.62 | 6.90 | 0.00 | |

| | | | | | |
|----------------------------------------------------------------|-------|-------|-------|------|--|
| Syllabus covers the recent advancements in respective subjects | 37.93 | 51.72 | 10.34 | 0.00 | |
| Syllabus caters to local and global needs | 24.14 | 58.62 | 17.24 | 0.00 | |

Birla College of Arts, Science and Commerce (Autonomous), Kalyan
 1.4.2 Institutional Feedback (July 2020 – June 2021)



| X- Axis Label | Details About X-axis Label | Y-axis Score Obtained |
|----------------------|-----------------------------------|------------------------------|
| 1 | Teaching - Learning Process | 8.14 |
| 2 | Conduct of Examination | 8.2 |
| 3 | Library Facilities | 8.3 |
| 4 | Extra-curricular activities | 8.35 |
| 5 | Security Services | 8.5 |
| 6 | Grievance Redressal | 8.5 |

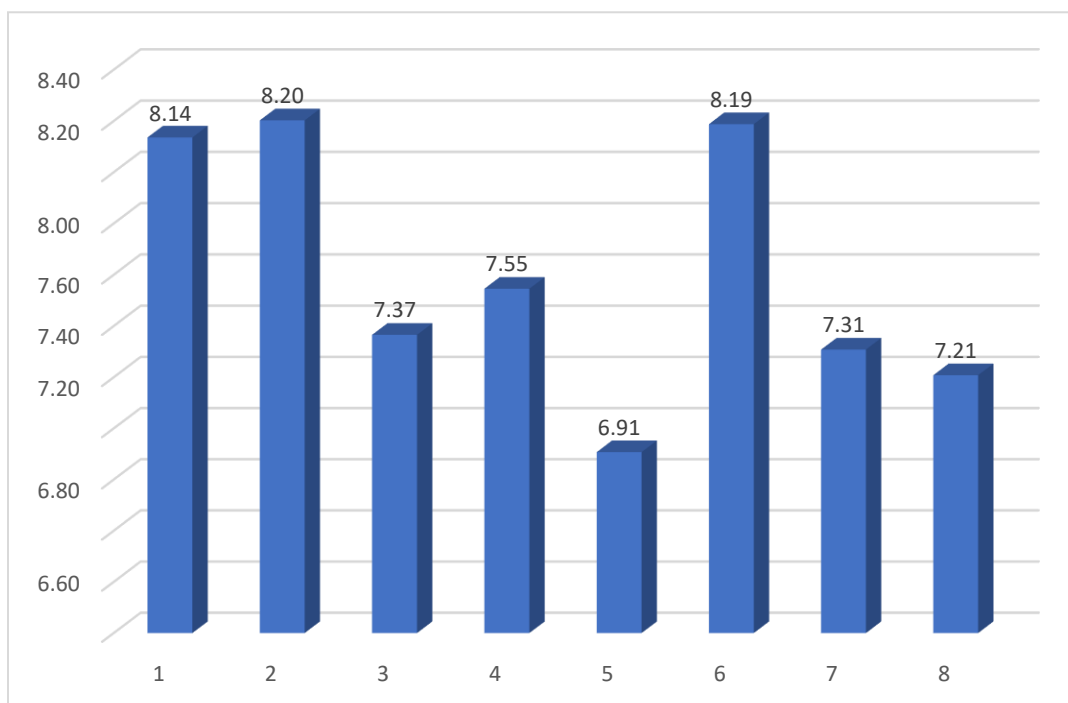
Action Taken Report

| Sr. No | Agenda | Focused Area | Action Taken |
|--------|-----------------------------------------------------|-------------------------------------------------------------------------|-----------------------------------------------------------------------------------------------------------------------------------------------------------------------------------------|
| 1 | The teacher's effectiveness in teaching the subject | Upgradation of knowledge by teachers in their respective subjects. | Faculties are have attended faculty development programs, refresher and orientation courses, workshops, and seminars. |
| 2 | Clarity of teacher's Voice and Communication Skills | To enhance the clarity of teachers' voices in big-size classrooms. | Teachers are provided with microphones and digital podiums. |
| 3 | Teacher's use of examples and illustration | Some of the theory-based courses needed more examples and illustrations | Relevant examples and illustrations are added to make the learning more effective. |
| 4 | Readiness to extra help when needed | Students weak in written and spoken English need extra help | Remedial coaching and intensive coaching classes are conducted. |
| 5 | Level of discipline maintained in the class | Punctuality and regularity of the students | Late arrival and irregularity in the class are not allowed. Proper communication with parents is ensured |
| 6 | Punctuality of Teacher | The arrival of the teachers for Morning session lectures | Through staff meeting, the good conduct of the teachers is ensured and individual cases are addressed by the principal. Training and induction are given to the new entrants by IQAC |
| 7 | Interaction with students | Understanding the problems of every student. | Regular parent-teacher meet is conducted, effective interactions with students are ensured through orientation and induction training programs at the beginning of every academic year, |

B. K. Birla College of Arts, Science, and Commerce (Autonomous), Kalyan

1.4.1 Institutional Feedback

(July 2020 – June 2021)



| X- Axis Label | Details About X-axis Label | Y-axis Score Obtained |
|----------------------|--------------------------------------|------------------------------|
| 1 | Teaching - Learning Process | 8.14 |
| 2 | Conduct of Examination | 8.20 |
| 3 | Library Facilities | 7.37 |
| 4 | Extra-curricular activities | 7.55 |
| 5 | Sports Facilities | 6.91 |
| 6 | Security Services | 8.19 |
| 7 | Grievance Redressal | 7.31 |
| 8 | Drinking water and Washroom facility | 7.21 |

Birla College of Arts, Science and Commerce (Autonomous), Kalyan

1.4.2 Institutional Feedback(July 2020 – June 2021)

Action Taken Report

| Sr. No | Agenda | Focused Area | Action Taken |
|---------------|-----------------------------|----------------------------------------------------------------------------------------------------------------------------------------------------------------------------------------------------------------------------|-------------------------------------------------------------------------------------------------------------------------------------------------------------------------------------------------------------------------------------------------------------------------------------------------|
| 1 | Teaching - Learning Process | Relevance of the subjects taught with the market needs, recent local and global developments in the fields of science and technology, relevance of the subjects with entrepreneurship, employability and skill development | The syllabi are revised periodically and approved by BoS, the syllabi are incorporated with topics on newer scientific and technological developments. Topics which can increase the employability and practical which can develop the skill sets of the students are included in the syllabus. |
| 2 | Conduct of Examination | Choice for internal assessment | Projects, extra practical, scientific competitions, workshops, and seminars are incorporated. |
| 3 | Library Facilities | Need of digital library | Several e-books, e-journals are made available by the library |
| 4 | Extra-curricular activities | Intercollegiate programmes | A few online and offline intercollegiate programmes were restarted to include a greater number of students. |
| 5 | Sports Facilities | A few more instruments for physical exercise and proper training for archery | New instruments were purchased and a trainer for archery was appointed |
| 6 | Security Services | Proper security especially during pandemic to follow the social norms | Pandemic Specific Social norms were enforced in the campus |

| | | | |
|---|---------------------|--------------------------|------------------------------------------------|
| 7 | Grievance Redressal | Resolving the grievances | A committee is formed for reported grievances. |
|---|---------------------|--------------------------|------------------------------------------------|